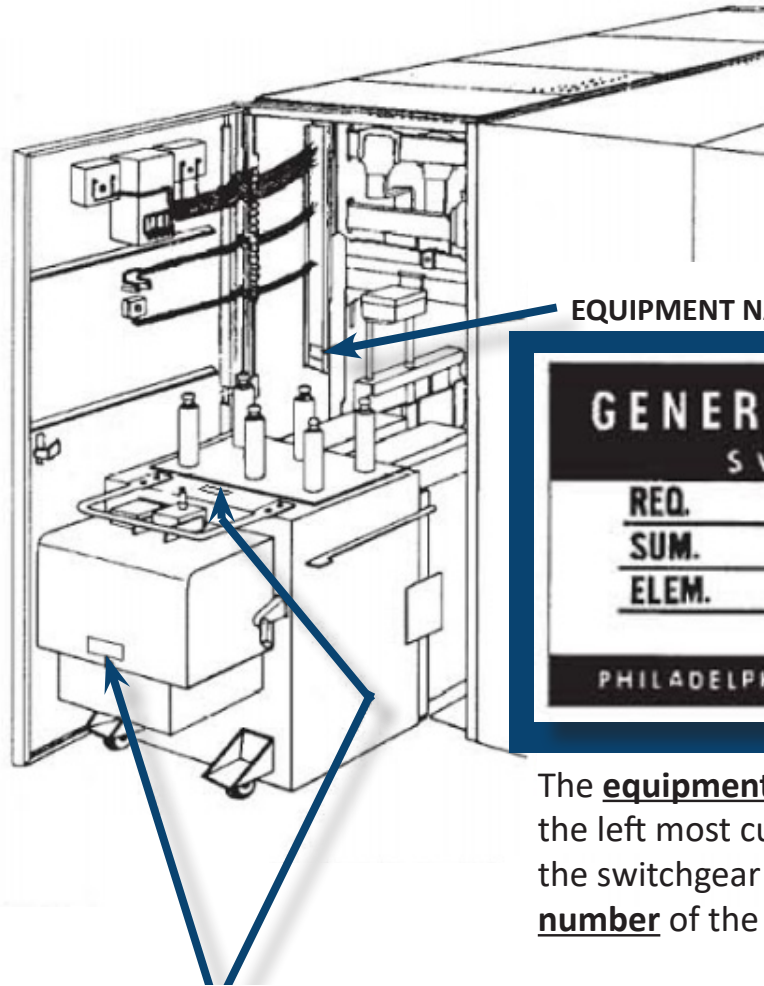
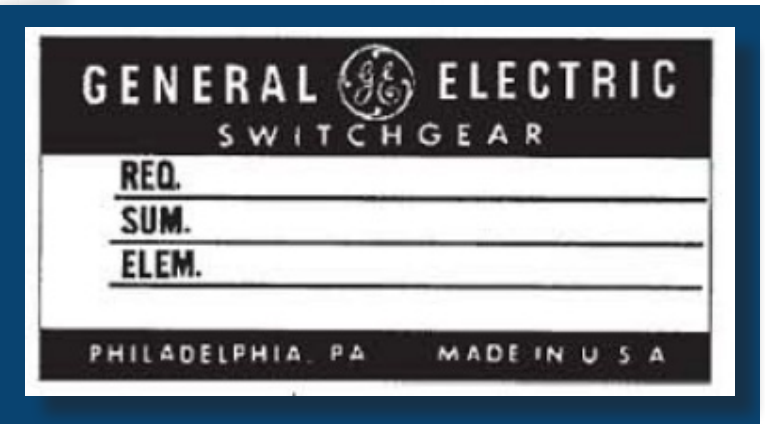


How to find the Summary Number on a switchgear & the Serial Number on a breaker

Licensed provider of genuine GE renewal parts

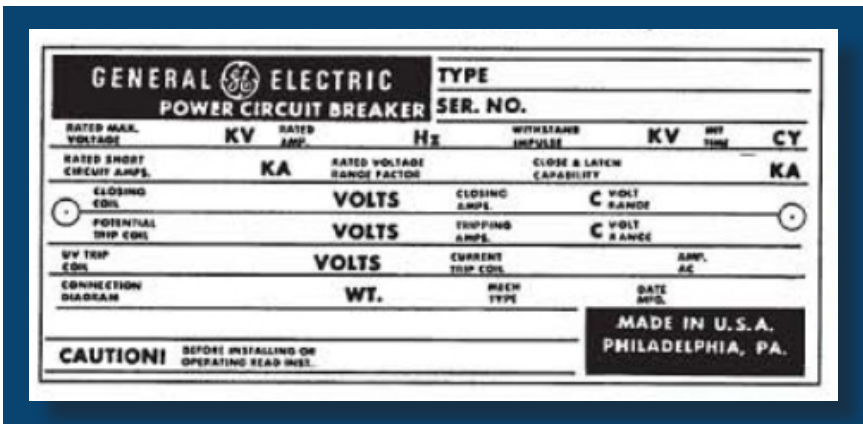


EQUIPMENT NAMEPLATE



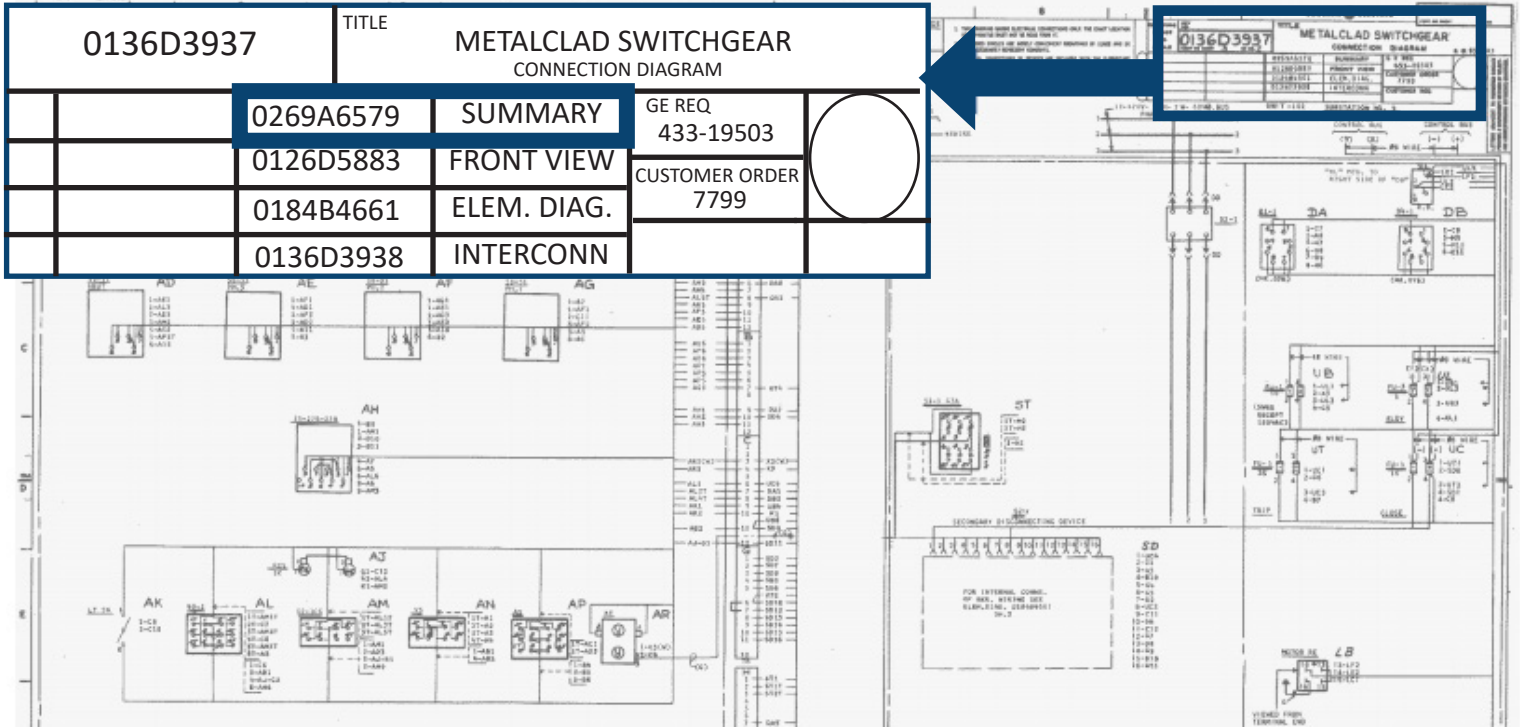
The equipment nameplate is located in the left most cubical on the breaker side of the switchgear and contains the summary number of the switchgear.

BREAKER NAMEPLATE



The breaker nameplate is located on the front or top of the breaker and contains all of the characteristics, including the breaker serial number.

The summary number can also be obtained from a connection diagram or interconnection diagram for the switchgear.



The summary number can also be obtained from sheet 1 of the elementary diagram for the switchgear.

